

X-MET series USB driver installation on Windows

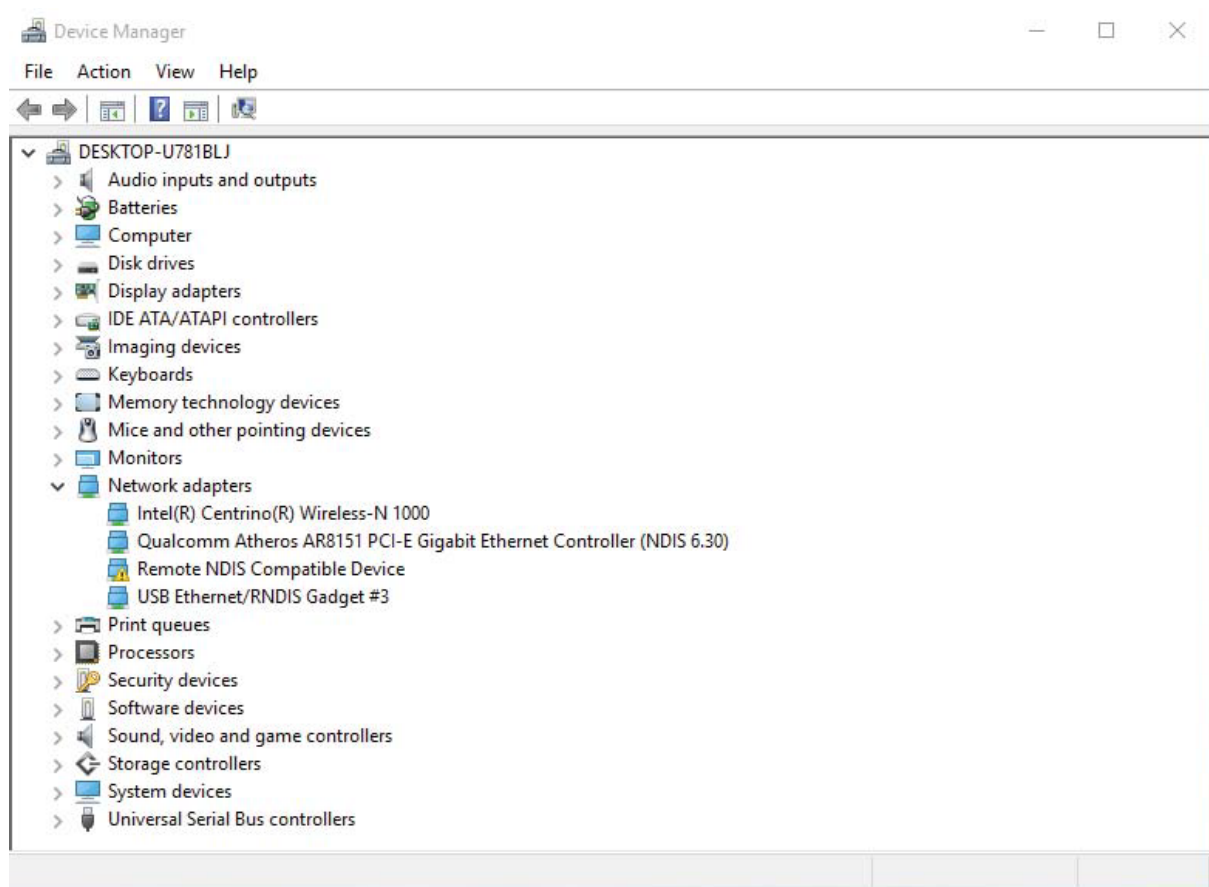
This file contains installation instructions for different Windows versions:

- [Windows 10](#)

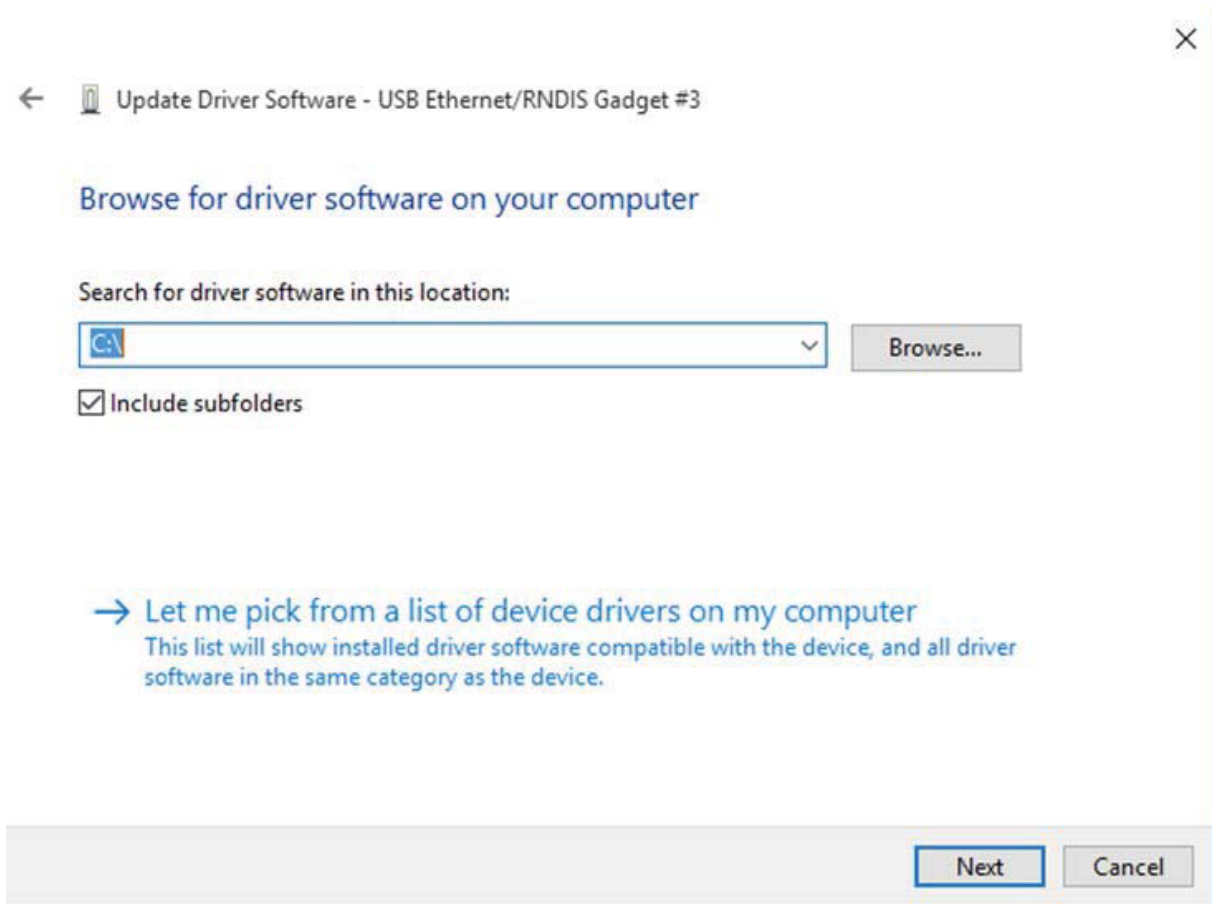
X-MET series USB driver Installation on Windows 10

Windows 10 automatically installs the driver for X-MET after the instrument has been plugged in to the USB-port. Below instructions show the steps needed to manually locate and update the driver software for the instrument.

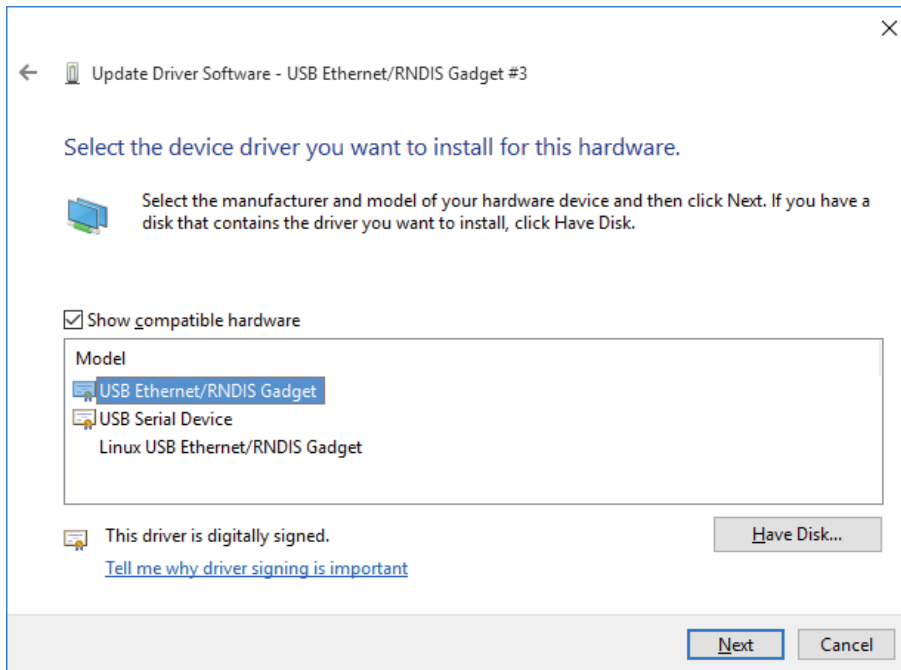
If the driver is not installed automatically, because the X-MET is recognized at eg. as COM3. Select de USB at the COM. Go to properties and select new driver software (20342321_32450c5ebb31a11d277d97836264223a430aa06d.cab). The driver software is copied in a folder (free to choose). Open the driver from the folder and the driver will be installed. The manual can be followed as described below.



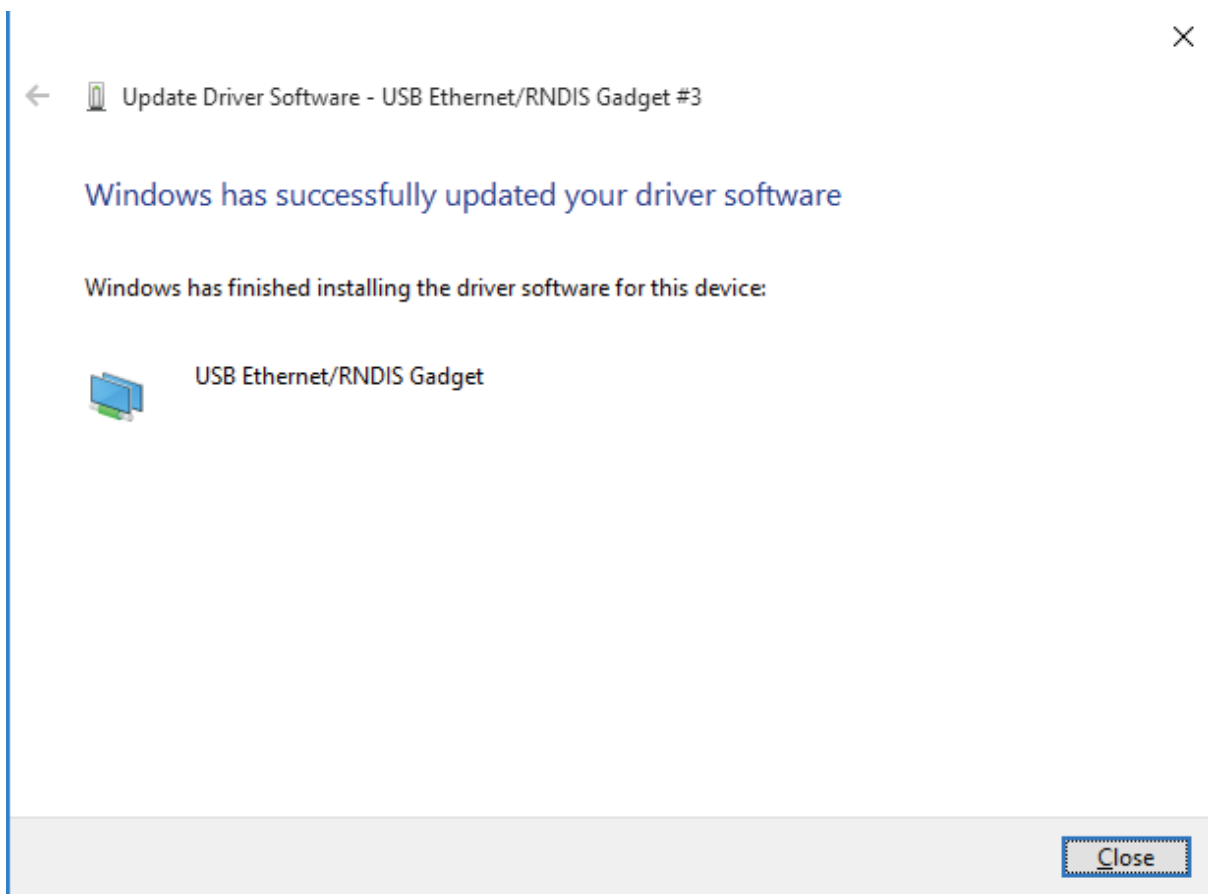
Select 'Let me pick from a list of device drivers on my computer' in the next window:



Select 'USB Ethernet/RNDIS gadget' and select 'Next'.



After successful installation, close the last window.



Go to the internet browser and connect to webpage 10.0.0.1 and the software will start.